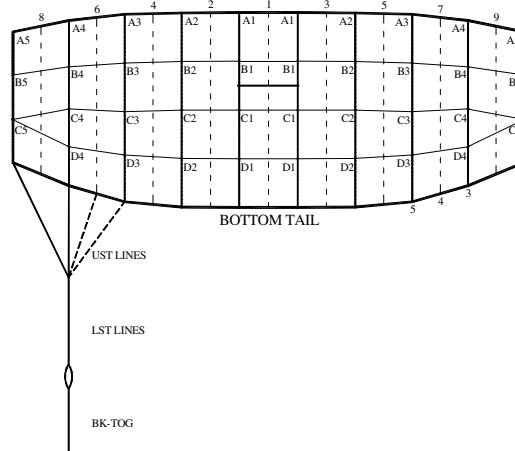




LINE TRIM CHART
FOR

VENGEANCE 089 - 170



	Measurement in Inches							Measurement in Centimeters						
	VN-089	VN-097	VN-107	VN-120	VN-135	VN-150	VN-170	VN-089	VN-097	VN-107	VN-120	VN-135	VN-150	VN-170
A1	102 5/8	107 1/8	112 1/2	119 1/8	126 3/8	133 1/8	141 3/4	260.7	272.0	285.7	302.6	320.9	338.2	360.1
A1-B1	2 7/8	2 7/8	3 1/8	3 1/2	3 1/4	3 3/4	4	7.3	7.4	8.1	8.8	8.4	9.7	10.2
A1-C1	8 1/4	8 1/2	9	9 1/2	10 1/8	10 5/8	11 3/8	20.9	21.7	22.9	24.2	25.6	27.1	28.8
A1-D1	15	15 5/8	16 5/8	17 3/8	18 1/4	19 1/2	20 5/8	38.0	39.6	42.1	44.3	46.4	49.7	52.5
A2	102 5/8	107 1/8	112 1/2	119 1/8	126 3/8	133 1/8	141 3/4	260.7	272.0	285.7	302.6	320.9	338.2	360.1
A2-B2	2 7/8	2 7/8	3 1/8	3 1/2	3 1/4	3 3/4	4	7.3	7.4	8.1	8.8	8.4	9.7	10.2
A2-C2	8 1/4	8 1/2	8 7/8	9 1/2	10	10 5/8	11 1/4	20.8	21.6	22.7	24.0	25.5	26.9	28.7
A2-D2	14 7/8	15 1/2	16 3/8	17 1/4	18 1/8	19 3/8	20 5/8	37.9	39.4	41.7	44.0	46.1	49.4	52.3
A3	103 1/8	107 3/8	113	119 5/8	127	133 3/4	142 1/4	262.0	272.7	287.1	303.9	322.5	339.8	361.4
A3-B3	2 1/2	2 5/8	2 3/4	3	2 3/4	3 1/8	3 3/8	6.3	6.7	7.0	7.5	6.9	8.1	8.6
A3-C3	7 1/2	8 1/8	8 1/4	8 3/4	9 3/8	9 7/8	10 3/8	19.1	20.6	21.0	22.4	23.7	25.0	26.4
A3-D3	13 1/2	13 1/2	15	15 7/8	16 1/2	17 5/8	18 3/4	34.3	34.4	38.0	40.2	41.8	44.8	47.7
A4	103 1/4	107 5/8	113 1/8	119 7/8	127	133 1/2	142 5/8	262.3	273.5	287.4	304.4	322.7	339.1	362.3
A4-B4	2 1/8	2 1/4	2 1/4	2 1/2	2 3/8	3 1/4	3	5.5	5.7	5.9	6.5	6.2	8.3	7.6
A4-C4	6 3/4	7 1/8	7 1/2	7 7/8	8 3/8	9 1/4	9 3/8	17.2	18.0	18.9	20.0	21.2	23.5	23.7
A4-D4	11 7/8	12 3/8	13	13 3/4	14 3/8	15 7/8	16 3/8	30.0	31.4	33.0	35.0	36.5	40.4	41.5
A5	103 5/8	108	113 1/2	120 1/4	127 1/2	134	143	263.1	274.3	288.2	305.3	323.7	340.2	363.3
A5-B5	2 1/4	2 3/8	2 1/2	2 3/4	2 1/2	3 3/8	3 1/4	5.9	6.1	6.5	7.0	6.5	8.7	8.2
A5-C5	7 1/4	7 1/2	8	8 3/8	8 7/8	9 3/4	9 7/8	18.3	19.2	20.2	21.3	22.4	24.7	25.2
LST	73 5/8	76 5/8	80 1/4	84 3/4	87 3/4	92 1/4	97 7/8	187.1	194.7	203.8	215.1	222.9	234.2	248.6
A5-UST1	11 3/8	11 5/8	12 1/8	12 1/2	13	13 7/8	14 1/8	28.8	29.7	30.7	31.9	33.1	35.3	35.8
A5-UST3	7 7/8	8	8 1/4	8 1/2	7	7 1/2	7 3/8	20.0	20.4	20.8	21.4	17.8	19.1	18.7
A5-UST4	9	9 1/8	9 1/2	9 3/4	8 1/4	8 7/8	8 7/8	22.7	23.3	24.0	24.7	21.1	22.7	22.5
A5-UST5	11 7/8	12 1/4	12 5/8	13 1/8	12	12 3/4	12 7/8	30.1	31.3	32.2	33.5	30.6	32.5	32.7
B STAB SLK	1/2	1/2	1/2	1/2	1/2	1/2	1/2	1.3	1.3	1.3	1.3	1.3	1.3	1.3
C STAB SLK	1	1	1	1	1	1	1	2.5	2.5	2.5	2.5	2.5	2.5	2.5
BK-TOG*	12	12 3/8	13	13 3/4	15 3/8	16	17 1/8	30.5	31.4	32.9	34.9	39.1	40.8	43.5
Channel	26" Chord	26" Chord	26" Chord	23" Chord	23" Chord	23" Chord	23" Chord	66 Chord	66 Chord	66 Chord	58.4 Chord	58.4 Chord	58.4 Chord	58.4 Chord
Slider	31" Span	31" Span	31" Span	31" Span	31" Span	31" Span	31" Span	78.7 Span	78.7 Span	78.7 Span	78.7 Span	78.7 Span	78.7 Span	78.7 Span

*Due to development methodology, the finished BK-TOG dimensions may not scale

*Refer to Document MAN-018 or MAN-019 for measuring sliders