



## SERVICE BULLETIN no. 01/01/2014

### Inspection of the sporting parachute containers

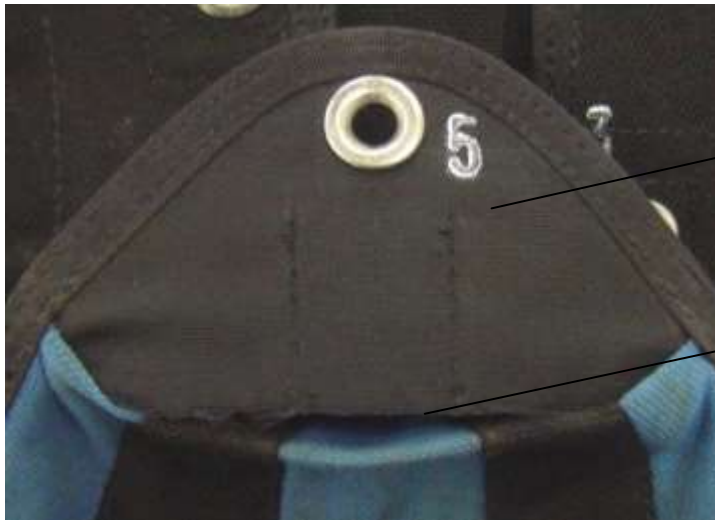
1. **SUBJECT MATTER:** Parachute container  
OP – 093/ 01, sizes 1 and 2  
OP – 087 of all produced sizes,  
with completed lower (central) flap of the reserve parachute container in such way the external fabric covering the reinforcement has the same length as the reinforcement – see annex no. 1, fig. no. 1 or the fabric exceeds the reinforcement edge by less than 15 mm (measured in the flap centre).
2. **REASON:** The reserve parachute container flaps failed to open completely during the exercise land opening of the reserve parachute container in the above design, after releasing the ripcord handle reserve. The upper covering flap of the reserve parachute container remained trapped behind the reinforcement edge of the lower (central) flap of the reserve parachute container.
3. **MEASURES:** **The packager or the user:** performs the inspection of the parachute and performs the lower (central) flap of the reserve parachute container – see annex no. 1, fig. no. 2.  
The inspection could be performed also with the packed parachute.  
In case the parachute complies with the specification in point 1, **it terminates its use** and it must be delivered to the manufacturer.  
**Manufacturer:** Performs the repair work of the lower (central) reserve parachute container flap.  
**Warning:**  
In case the parachute does not comply with the design specification as per point 1 and the fabric length will exceed the reinforcement edge by more than 15 mm (measured in the flap centre), **its further use is possible in operation.**  
The person performing the inspection confirms the state by recording „complies with SB no. 01/01/2014“ in the Technical certificate of the parachute container with the harness in the table of repair works and inspections.
4. **VALIDITY:** From date of bulleting issue.
5. **DATE OF ISSUE:** In Jevíčko on 10.01.2014  
Ing. Jaroslav Sedlák – Technical Department Manager  
MarS a.s.

Stamp and signature:





Annex no. 1 Service bulletin no. 01/01/2014



the fabric exceeds the  
reinforcement

the reinforcement edge

Fig. no. 1 - detail of the lower (central) reserve parachute container flap



Fig. no. 2 – full view of the reserve parachute container