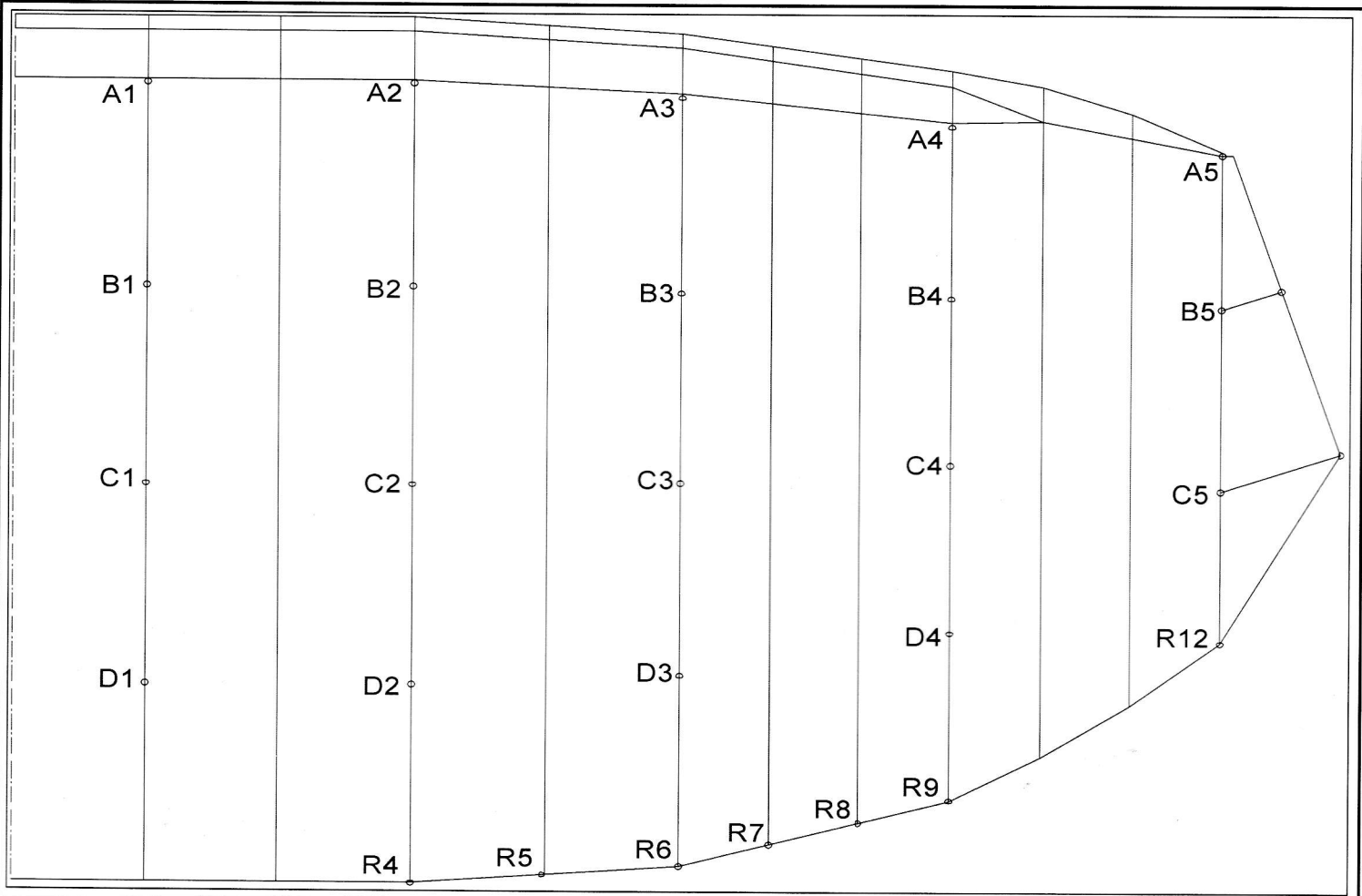


HOP 330



Před demontáží šňůr si prohlédni postup napojení a způsob zašití. Jiným způsobem zapojení, nebo zašití riskuješ vážné zranění nebo smrt uživatelů.

Before dismantling the lines look carefully at the procedure of connection and method of sewing. By the different connection of lines or sewing, big risk of serious injuries or death is involved.

| | | | | | | | | | | | | | | |
|-----------|--------------|----------|-----------|--------------|--------------|-----------|--------------|--------------|-----------|--------------|------------|-----------|--------------|----------|
| A riser 1 | 311,0 | 182,0 A1 | A riser 2 | 311,0 | 182,0 A2 | A riser 3 | 311,5 | 182,0 A3 | A riser 4 | 327,0 | 182,0 A4 | A riser 5 | 326,0 | 175,0 A5 |
| | | 187,0 B1 | | | 186,0 B2 | | | 186,0 B3 | | | 182,0 B4 | | | 177,0 B5 |
| B riser 1 | 315,5 | 209,0 C1 | B riser 2 | 314,5 | 209,0 C2 | B riser 3 | 313,5 | 209,0 C3 | B riser 4 | 316,0 | 209,0 C4 | B riser 5 | 521,0 | C5 |
| | | 244,5 D1 | | | 244,0 D2 | | | 242,0 D3 | | | 231,5 D4 | | | |
| | | | | | R4 | R5 | R6 | R7 | R8 | R9 | R12 | | | |
| | | | | | 213,0 | 206,5 | 210,5 | 200,0 | 200,0 | 205,5 | 201,5 | | | |
| | | | | | 390,0 | | | 322,0 | | | | | | |
| | | | | | | | | 74,0 | | | | | | |