

# New Mirage Velcroless RSL System Supplemental Instructions

All Mirage harness/container manufactured from January of 2008 are now equipped with our new Velcroless RSL lanyard retainer system. Please, read these instructions carefully, you must be familiar with its assembly. You may contact our technical support at Mirage Systems, Inc. or visit our website at [www.miragesys.com](http://www.miragesys.com).

## The RSL system

The Reserve Static Line System (RSL) is optional on the Mirage harness/container. To properly use a system equipped with an RSL, you must be familiar with its assembly, operation and function. You must also receive training from competent instructors prior to using such a system. It is not the intention of this manual to provide such training.

## Function

The RSL system consists of a lanyard between the left main riser and the reserve ripcord. It is designed to use the mechanical force of the released main risers after a cutaway to pull the reserve ripcord pin. It is not guaranteed to function properly and should not be relied on to activate your reserve.

## Operation

The RSL is essentially a passive system. A release lanyard is provided to disconnect the system. Use and operation of the system should be explained by competent instructors.

## Assembly of the RSL



Fig. 1

Mate ½" x ½" hook and pile Velcro on RSL lanyard, and insert it into the metal housing channel. [Fig. 1]

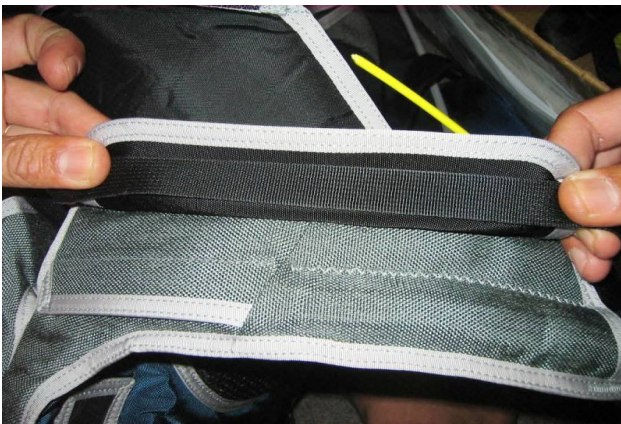


Fig. 2 & 3



Mate RSL Lanyard with RSL retainer. Fold down both RSL lanyard and retainer back toward yoke. [Fig. 2 & 3]

## Assembly of the RSL



Fig. 4

Prior to closing flap #6, thread reserve ripcord through the RSL guide rings with the ring on the RSL lanyard between the guide rings. [Fig. 4]

**Important:** Proper configuration of the reserve ripcord through the RSL rings is critical to proper function of the RSL system.



Fig. 5

Thread flap #6 under the type 4 retaining strap on the reserve pin cover. [Fig.5]

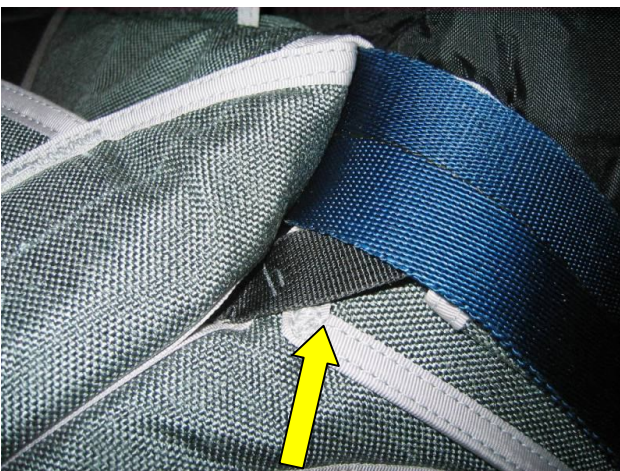


Fig. 6

After closing flap #6, neatly tuck the excess lanyard under the reserve riser and stow the yoke assembly tucktabs. [Fig. 6]

## Assembly of the RSL



Fig. 7

Attach the snap shackle to the main riser RSL ring and inspect routing. The RSL snap shackle must not interfere with the operation of the 3-Ring System. [Fig.7]