

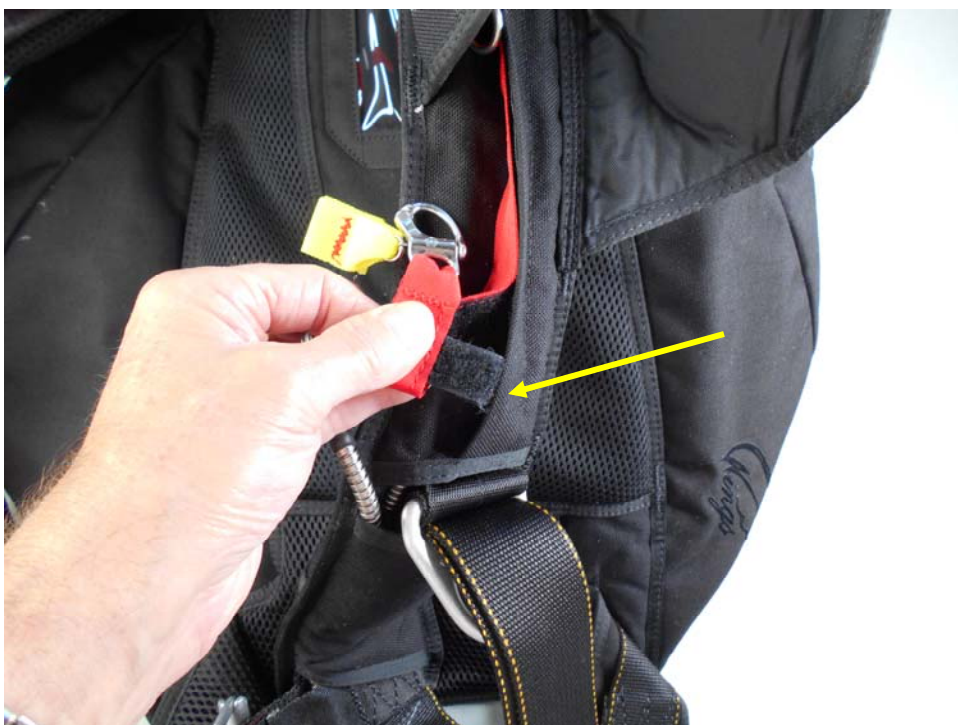
**Follow these Instructions for packing the Reserve Parachute using the “Reserve Boost” M.A.R.D. device with new RSL Lanyard.**



**Note:** RSL Lanyard is **Red** in these pictures for clarity only.

RSL Lanyard will be Black T-IV in most cases.

Mate the Pile Velcro of the RSL with the Hook Velcro under the RSL channel of the Left Side Reserve Riser. Start at the upper end of the channel and proceed to the bottom.



Fold the clasp end up towards the Reserve Container and tuck the Pile Velcro tab under the RSL cover mating with the Hook Velcro.



Should look like this.



Pass the Ripcord Pin and Cable through the ring on the RSL.



Pass the Ripcord Pin and Cable through the guide ring on the **Wings** Container.



Tuck the Reserve Pin and cable under the Reserve Top Flap as shown.



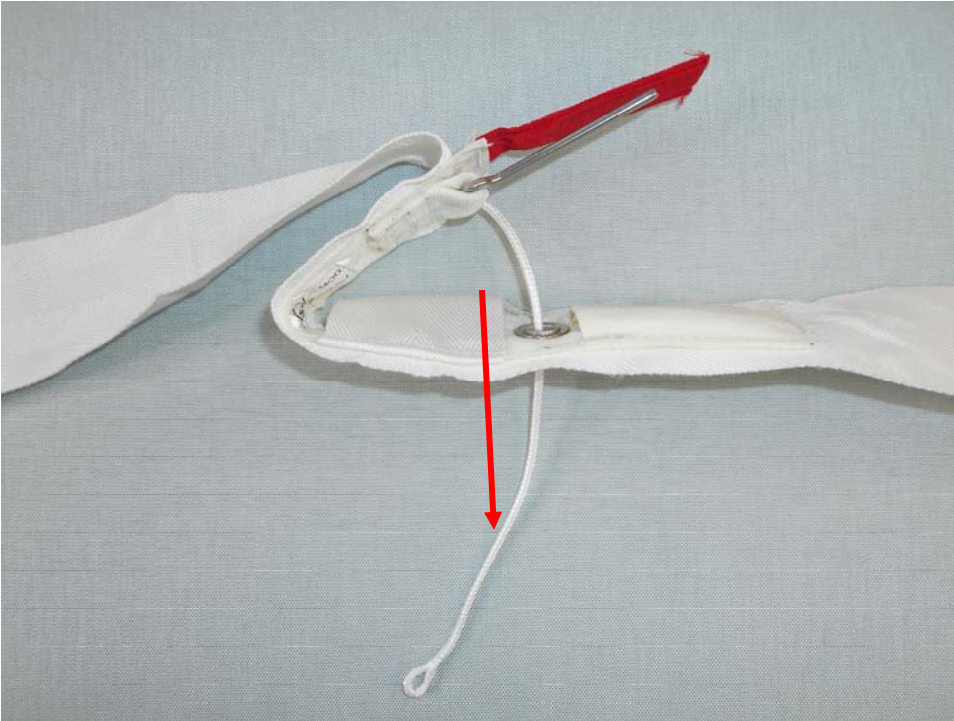
Before proceeding check to be sure that the Top Closing Flap and the Ripcord cable is under the tape of the Top Cover Flap.

Carefully lift the Free-bag up and over the Reserve Container and place into the open container. Be careful not to twist the lines.

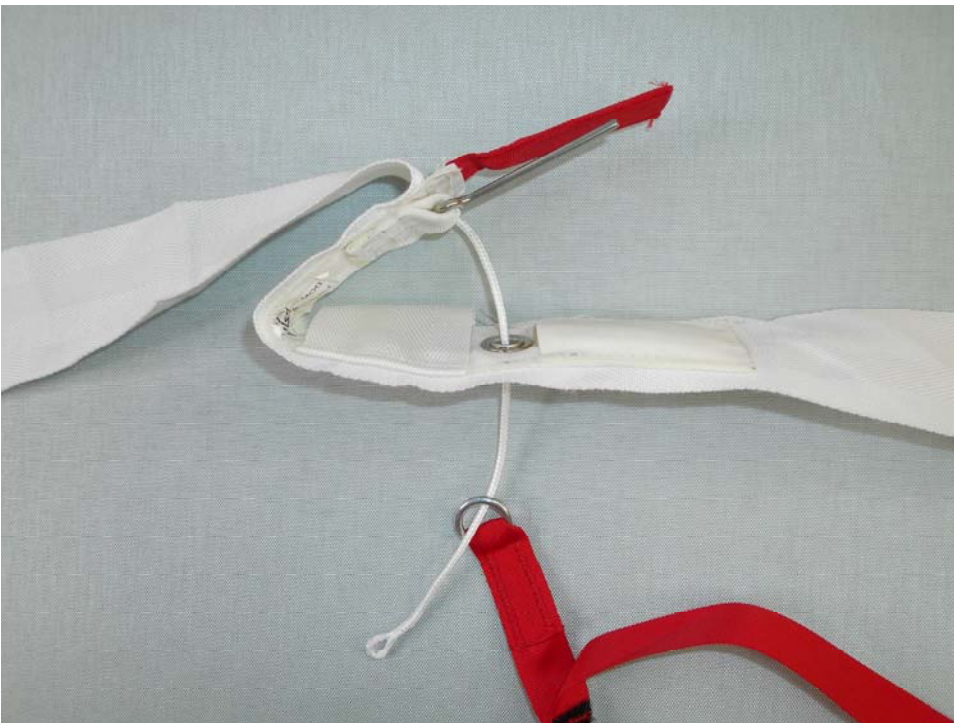


“S”-fold the bridle into 6”-8” folds across the bottom of the Free-bag to the M.A.R.D. “**Reserve Boost**” Modification.

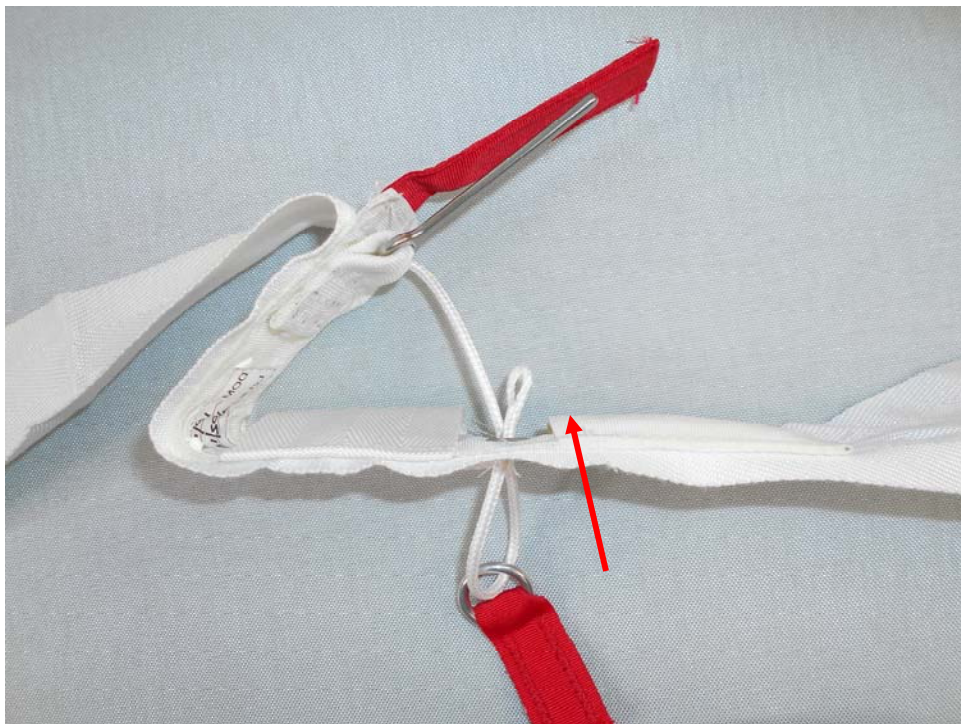
Bring the Bridle back up towards the top of the Reserve Container with the “**Reserve Boost**” Modification laid on top of the Free-bag left-of-center.



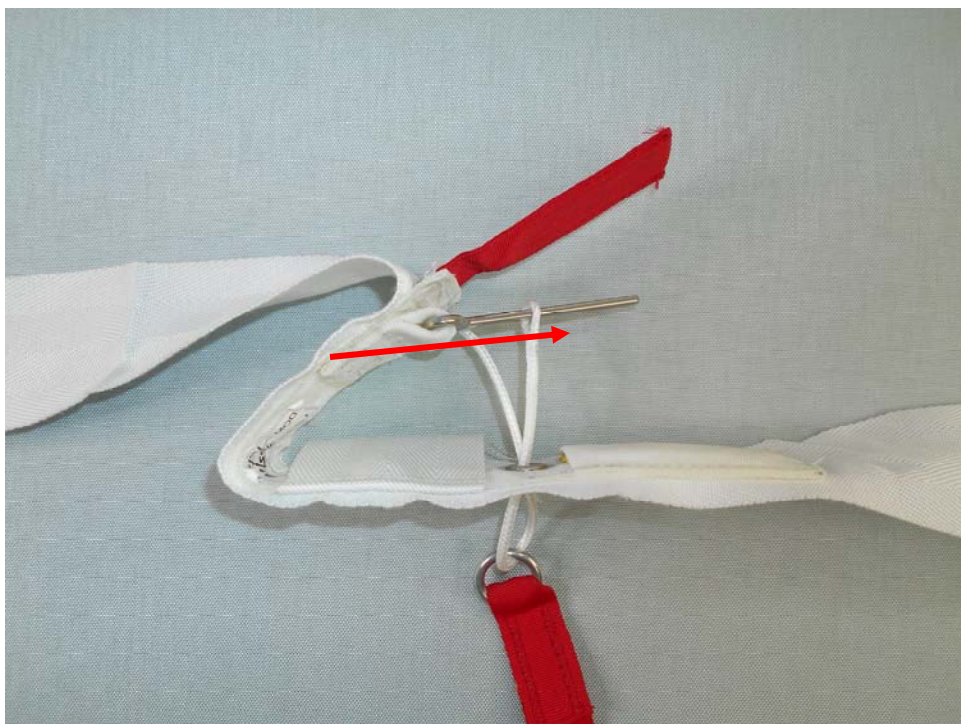
“Arm” the M.A.R.D. “**Reserve Boost**” at this time by passing the Spectra Line Loop down through the #0 grommet.



Pass the Spectra Line through the mini ring of the M.A.R.D. “**Reserve Boost**” RSL.



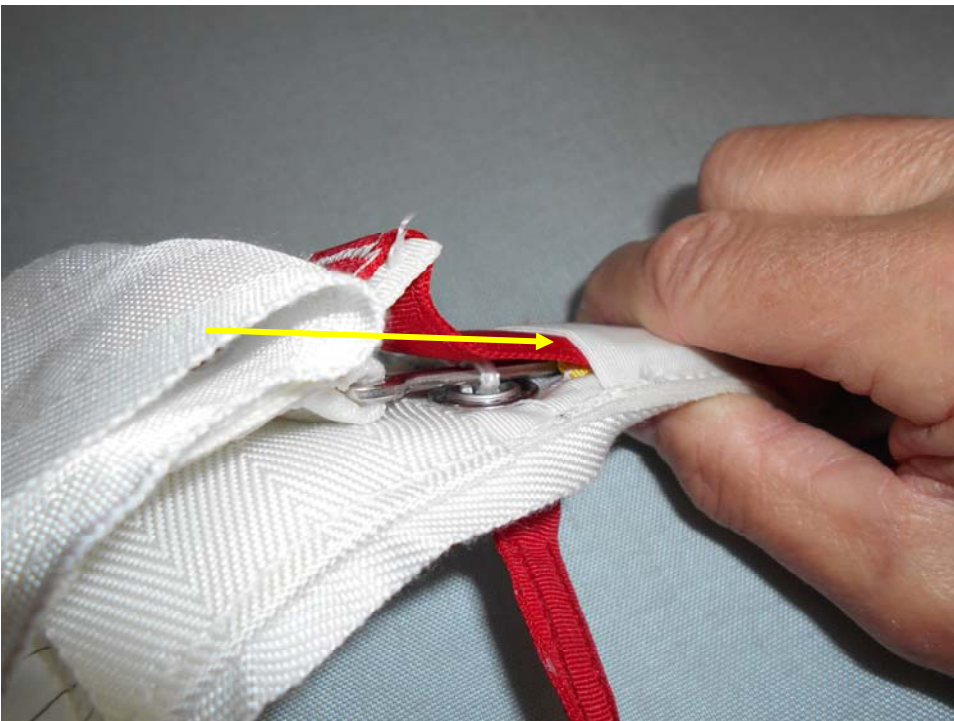
Loop the Spectra Line back up through the #0 grommet of the bridle.



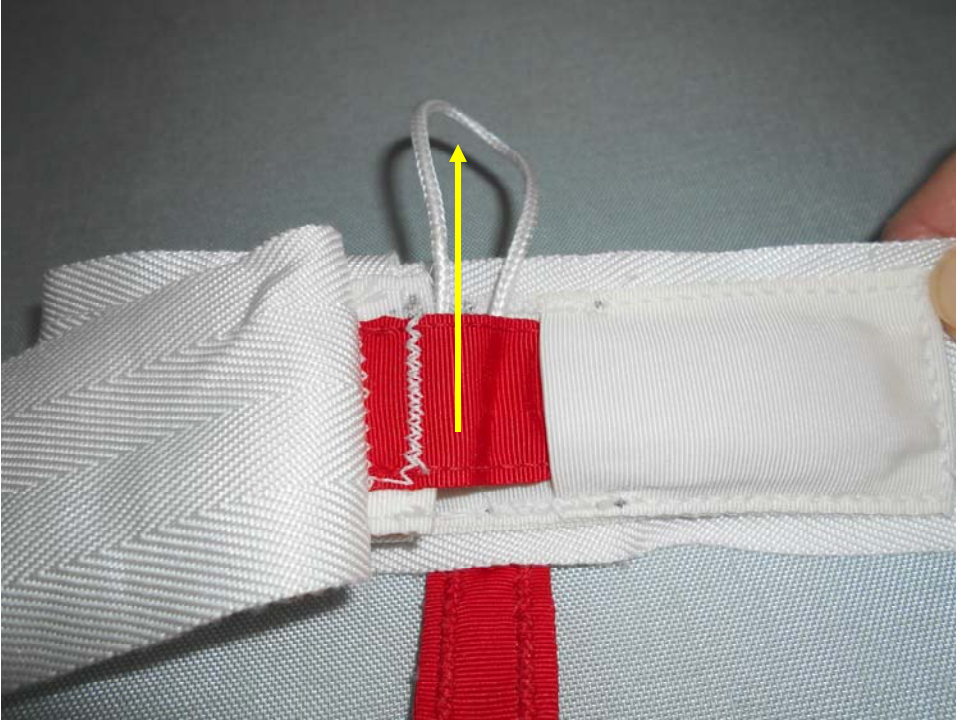
Slide the Long Pin through the loop on the end of the Spectra line.



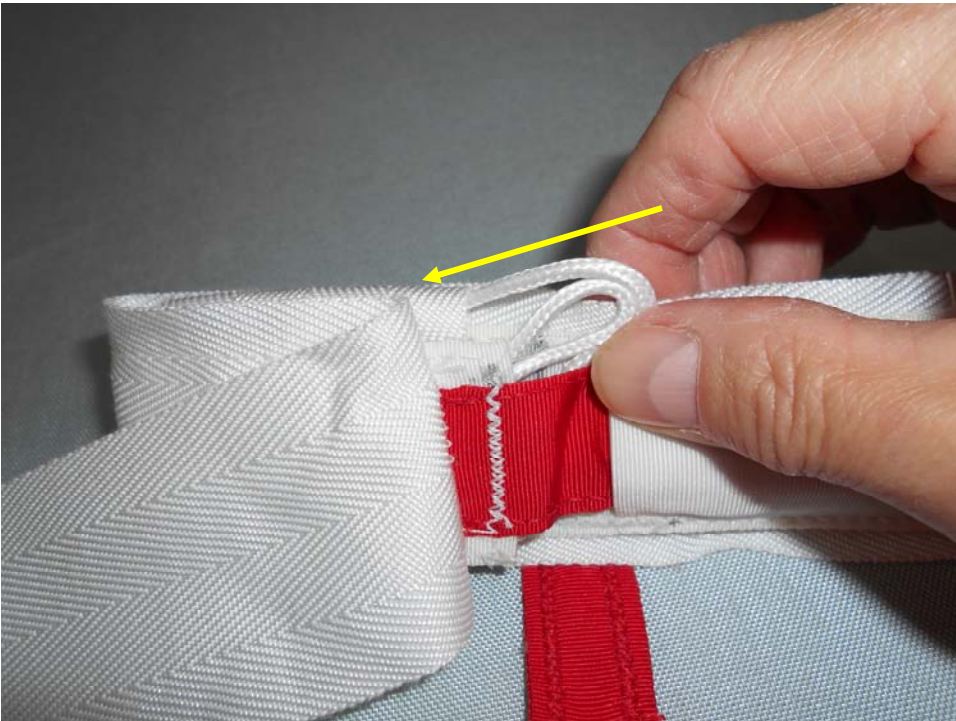
Stow the long pin into the channel under the tuck tab flap. Be certain that it is in its own channel of T-III tape (yellow).



Tuck the stiffened T-III Tab (red) into the tuck flap on top of the Long Pin Channel.

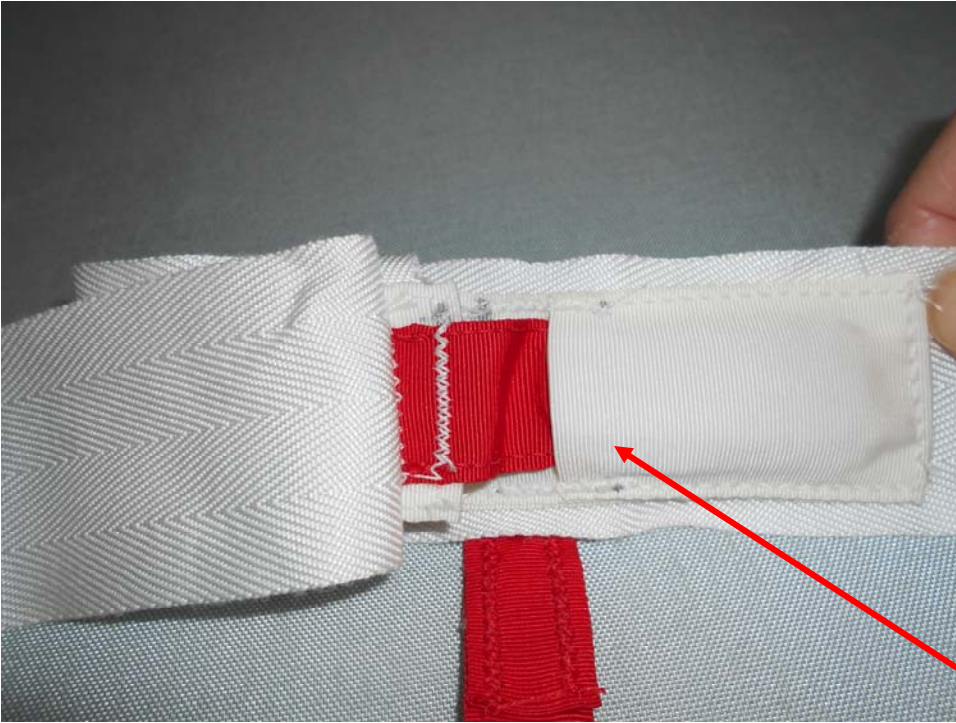


Pull any excess Spectra line up through the grommet.



Stow any excess Spectra line into the pocket shown.





Should look like this.





Tuck the folded Reserve Bridle under the Side Flaps .

Do NOT tuck more than 1" on each side.

Keep the Bridle to the left side of the center of the Free-bag.

Notice the “**Reserve Boost**” RSL rings and the Reserve Ripcord cable.



Close the Side Flaps with a temporary pin.

Remaining Reserve Bridle will exit the bottom of the Reserve Container.



“S”-fold the remaining bridle at a right angle to the tucked bridle and secure with the temporary pin.



Thread the pull-up cord through the Reserve Pilot-chute and center over the side flap grommets.

Gather the Ripstop fabric into the Reserve Spring but NOT the Mesh fabric and compress the Reserve Spring down to the Side Flaps.



Secure the Reserve Pilot-chute with a temporary pin.



**“Reserve Boost”**  
Lanyard should look like this.



Tuck any excess **“Reserve Boost”** lanyard into the pocket on the Free-bag.



Close the **Top Flap** and secure with a temporary pin.



Close and secure the **Bottom Closing Flap** with the Reserve Ripcord Pin.



Follow all applicable rules for documenting and sealing the Reserve Container.

**COUNT THE TOOLS USED DURING PACKING!**