



SIGMA TANDEM – Magnetic External Riser Cover Retrofit



*Scope:* To describe a process for systematically retrofitting the *Sigma External Riser Covers* with Magnetic Strip Assembly.



**ENGINEERING DEPARTMENT**

1645 LEXINGTON AVENUE ♦ DELAND FL 32724-2106 ♦ TELEPHONE +1 386 736 7589 ♦ FAX +1 386 734 7537

UPT@UPTVECTOR.COM ♦ WWW.UPTVECTOR.COM

INSTRUCT.SIGMA-MAGNETIC EXTERNAL RISER COVER RETROFIT.doc

**Step 1****YOKE TUCK TAB POCKETS**

Remove all stitching from plastic stiffener, including the warning label if present on the yoke tuck tab pockets. Next, cut a small incision on underside as shown.

**Step 2**

Extract the old stiffener from the yoke tuck tab pocket through this opening.

**Step 3**

Identify the *shorter* magnetic strips P/N: 006-010-001. Insert into the tuck tab pocket as shown.

*NOTE: Check the orientation of the assembly to make sure that the magnets will **attract** the magnets in the riser cover and not **repel** them*



Line up the strip  $1/8$ " along inside edge of pocket as shown.

**Step 4**

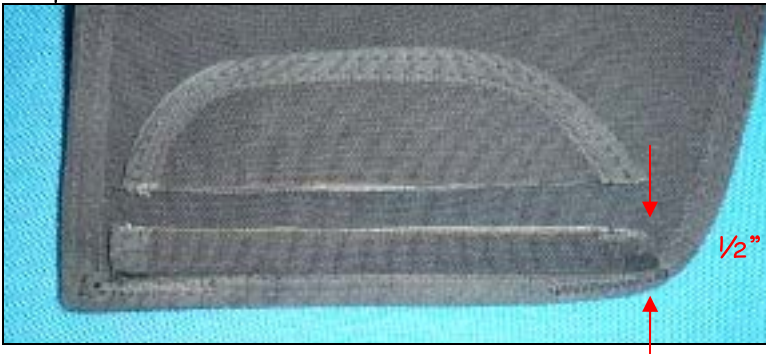
Sew down along old stitch line on the pocket, capturing short strip, and lock both ends.

Step 4 (cont)



Under side view of yoke flap.

Step 5



EXTERNAL RISER COVER

Mark tab  $\frac{1}{2}$ " from inside taped edge of External riser cover and then cut off along this mark.



Carefully remove the remaining piece of stiffener plastic as shown.

**Step 6**

Identify the *longer* magnetic strips P/N: 006-010-002. Position on the riser cover as shown and sew into place using E thread following the indicated stitch pattern.

*NOTE: Check the orientation of the assembly to make sure that the magnets will **attract** the magnets in the yoke flap and not **repel** them*

**Step 7**

Completed retro fit.