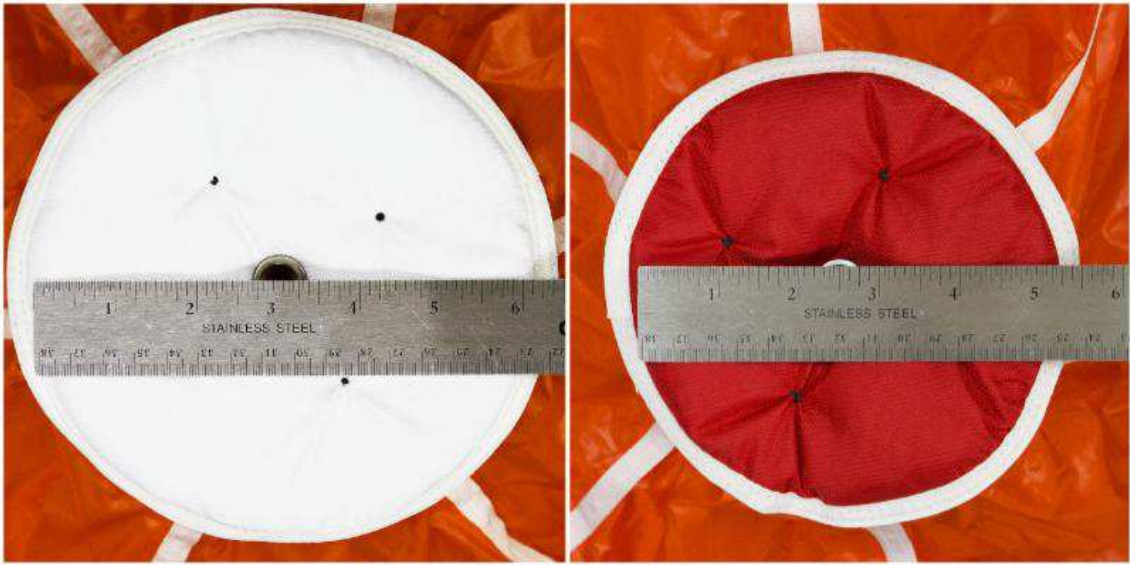


5" Capped Reserve Pilot Chute

We are introducing a new reserve pilot chute with a smaller 5" cap for use in all Micron containers. The new reserve pilot chute has a red cap to differentiate it from our standard reserve pilot chute which has a 6" white cap.

The reason for the change is that it creates a more aesthetically pleasing look in the smaller more compact containers. The larger containers don't show a cosmetic improvement and will continue to utilize the 6" white capped reserve pilot chute.



Information about and features of the red 5" capped RPC:

- Recessed grommet improves cosmetics by reducing the profile of the flaps closed over it, allowing the reserve pin cover to conform better to the container
- Same inflated diameter and drag as 6" capped PCs produced for decades
- Same spring as 6" capped PCs
- Same weight and balance as 6" capped PCs
- Red parapac top for easy identification
- Passed all required FAA TSO tests
- Passed all required PIA TS-112 tests
- Tested in V300 through Sigma sized containers
- No modifications required to replace a 6" PC
- **Will be supplied as the reserve PC for all Microns (V300-V320) beginning mid-August 2017**
- **MANDATORY for the V300 container**
 - The back side of the reserve center flap on all V300 containers is red with the following warning label:
 - **WARNING: This container is ONLY compatible with Uninsured United Parachute Technologies Red Topped Reserve Pilot Chute Part Number 022-001-001**
- **NOT tested/approved in Wonderhog, Winderhog Sprint, Vector 1, or Vector 2 containers**



Best regards,

Rosi Sigmon
Customer Service/Marketing Manager
United Parachute Technologies
1645 Lexington Ave, DeLand, FL 32724
Tel: 386-736 7589 / 386-804 4472 (c)