



## **Sigma Tandem Reserve Riser Modification**

### **Overview**

Sigma 2 reserve installation (using #6 rapide links) requires the removal of the 5-cord boxing and the Type 12 buffer on the reserve risers.

### **Machines/Tools required**

Snips or scissors

Needle nose pliers

Pencil or tailors chalk

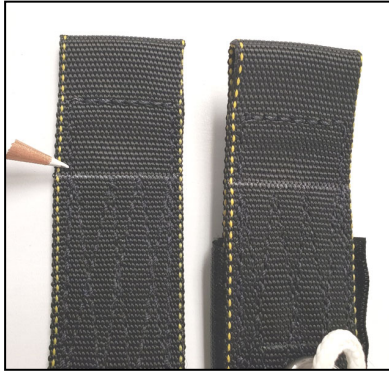
This work must be performed by a certified Master rigger.

## **ENGINEERING DEPARTMENT**

1645 LEXINGTON AVENUE ♦ DELAND FL 32724-2106 ♦ TELEPHONE +1 386 736 7589 ♦ FAX +1 386 734 7537

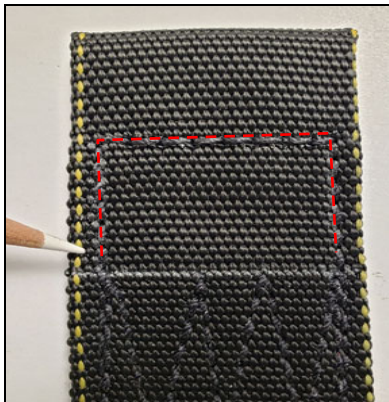
UPT@UPTVECTOR.COM ♦ WWW.UPTVECTOR.COM

INSTRUCT.Sigma Tandem Reserve Riser Modification.doc

**Procedure**

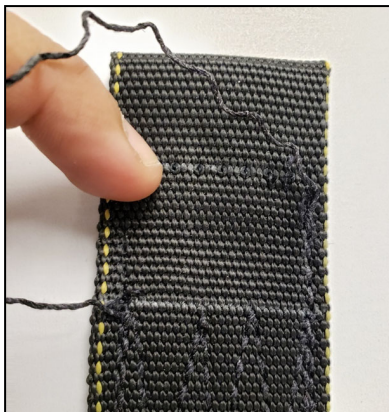
Draw a line at the top of the reserve riser four point.

Only remove stitching up to this point.



Remove only the stitching indicated in red, making sure to avoid damaging the webbing.

\*It should be noted that the 4-point stitch pattern must stay intact/verified after the completion of the modification.



Detail of 5 cord stitching removal.



With stitching removed the Type 12 buffer can be eliminated.

Repeat on all four (4) Riser ends.