



VECTOR 3SE RESERVE PIN COVER FLAP REPLACEMENT

Overview

Removal and replacement of the Vector3SE Reserve Pin Cover Flap.

This work must be performed by an FAA Certified Master Rigger or foreign equivalent.

Please notify UPT once this work has been completed.

Machines/Tools required

Single needle 301 sewing machine

Bartack machine - 42 stitch

Zig zag – 304 or 308 (optional)

Snips or scissors

Seam ripper

Lighter

Pliers

Screwdriver

Awl (optional)

Clamping tool for clamp (optional).

Materials Supplied by UPT

1 x Replacement Reserve Pin Cover (RPC)

1 x Housing Clamp P/N: MIS-H-1EAR CLAMP

1 x 9/16" Type-webbing

Optional

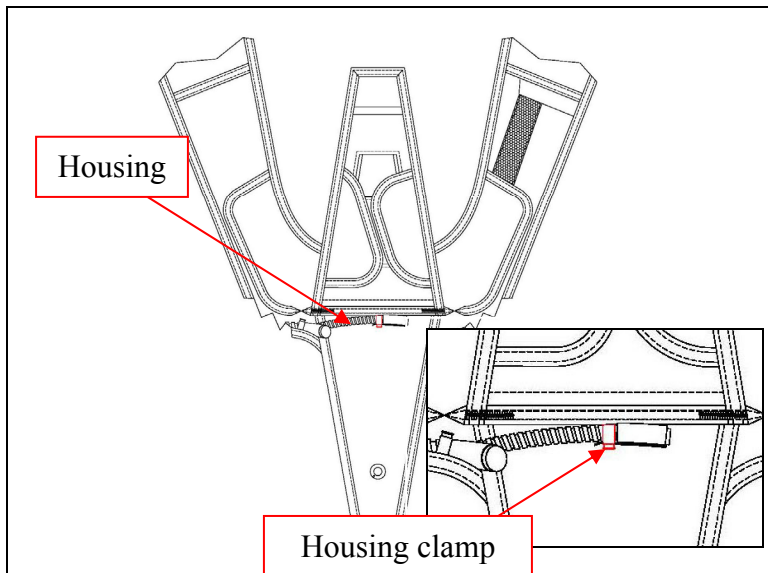
Wax handmaking thread (not supplied by UPT)

ENGINEERING DEPARTMENT

1645 LEXINGTON AVENUE ♦ DELAND FL 32724-2106 ♦ TELEPHONE +1 386 736 7589 ♦ FAX +1 386 734 7537

UPT@UPTVECTOR.COM ♦ WWW.UPTVECTOR.COM

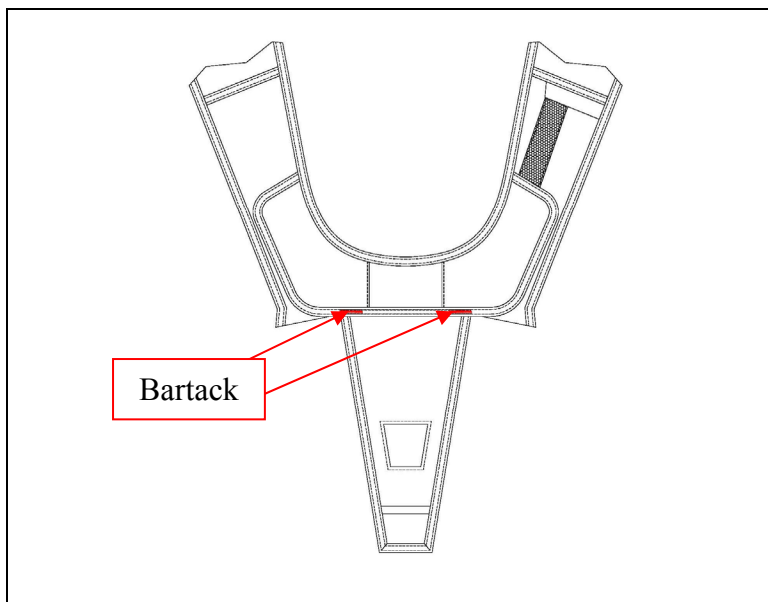
INSTRUCT-065 V3SE Reserve Pin Cover Installation.doc

Procedure

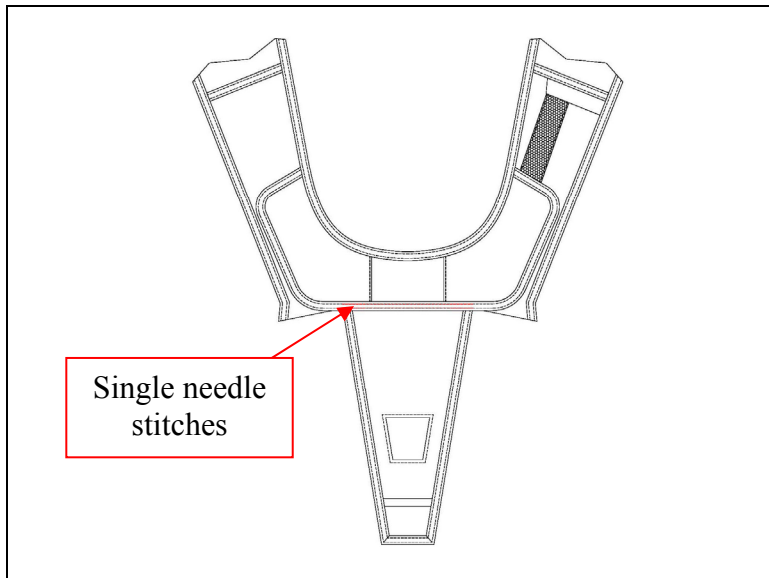
Before removing the Reserve Pin Cover flap that is being replaced, the housing needs to be detached from the clamp that secures it to the housing anchor loop.

This can be done using a screwdriver and an awl (or similar tools) to carefully pry open the clamp until the housing is free to move.

Discard the old clamp and Type-1

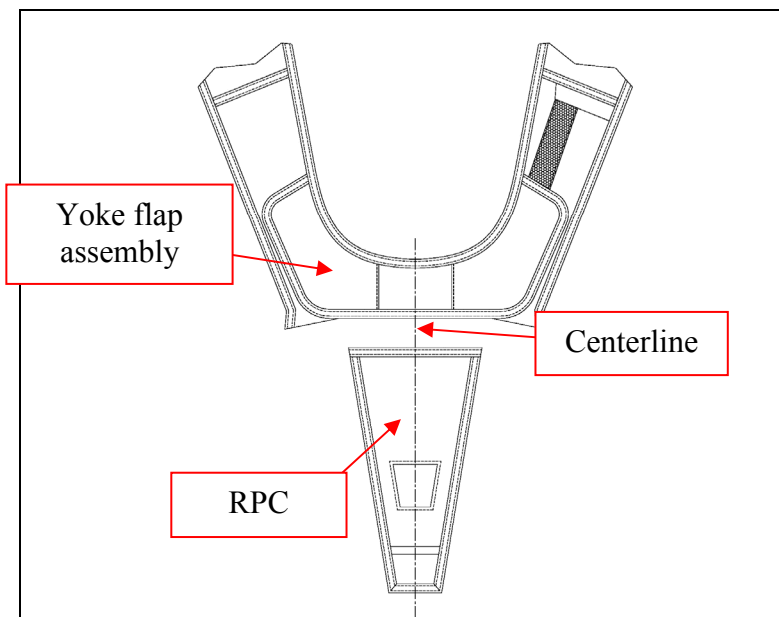


Carefully remove the two (2) indicated bartacks

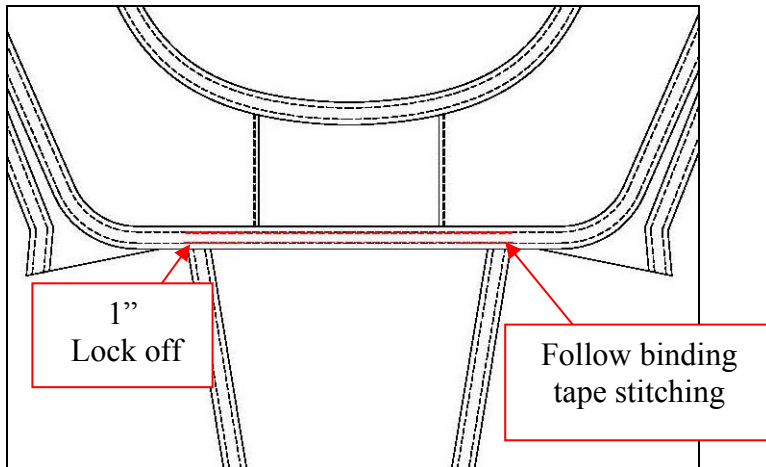


Next, carefully remove the two rows of single needle stitching attaching the RPC to the Yoke flap assembly.

The flap will now detach from the container.



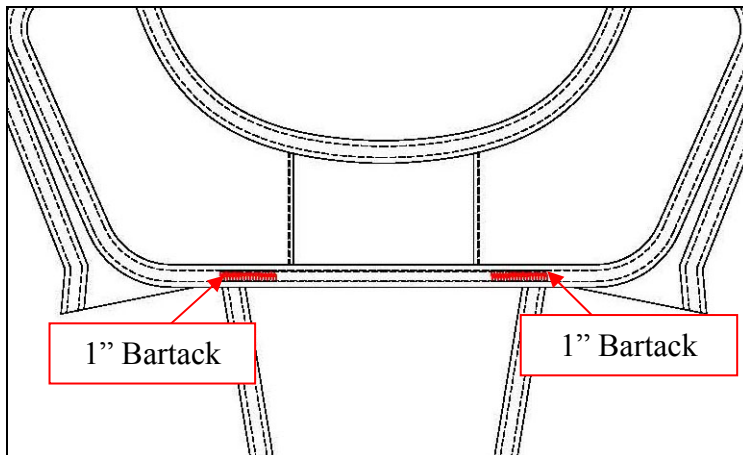
Mark the centerline on both the RPC and the yoke flap assembly before sewing to assist in proper alignment.



Installation of the replacement RPC is the reverse procedure.

Position the RPC so that the top bound edge is aligned with the binding tape of the Yoke flap.

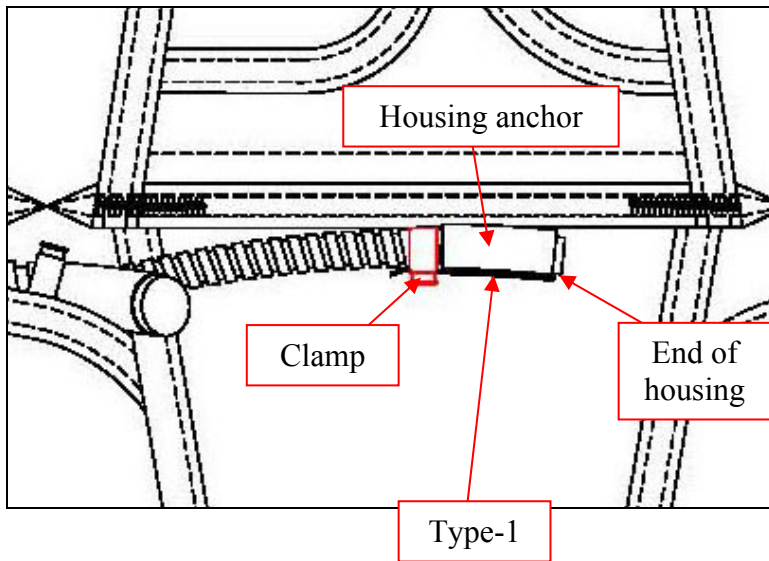
Using E thread, sew two (2) stitch rows following the binding tape stitch rows making sure to triple lock 1" min at each end. The stitch rows should also step over the edge of the RPC binding underneath.



Next, install two (2) 1" bartacks at the indicated locations.

Center the bartacks between the stitch rows.

Optional – Bartacks can be substituted with double row of 304/single row of 308



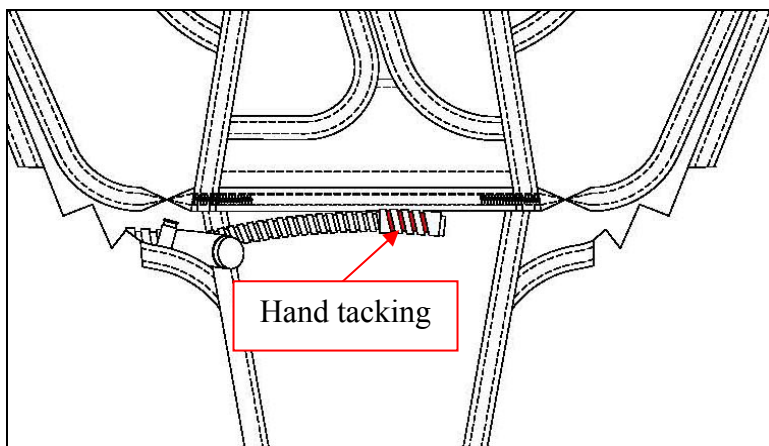
Reinstall the housing with the new clamp and Type-1 webbing.

Place the clamp on the housing first. Then pass the Type-1 webbing through the Housing loop anchor looping it back over to align the cut ends.

Move the clamp along the housing capturing the Type-1 until it is against the housing anchor.

The end of the housing should be even with the edge of the housing anchor.

Secure the clamp using the clamping tool or pliers making sure the ear of the clamp is facing downward and not sticking out.



Optional – secure the housing into the housing loop anchor using wax hand tack thread. There should be four (4) turns around the housing as shown.

This completes the installation of the replacement Reserve Pin Cover